

EDUCATION



PRODUCT CATALOGUE

Innovative mounting
solutions for
projectors, flat panels
& whiteboards



2020 - 2021 Product Catalogue - Education

WELCOME



You just opened our Education Catalogue

This catalogue is all about SmartMetals' mounting solutions specifically for educational purposes. Our product assortment is much larger and covered in separate catalogues mentioned below. All catalogues are downloadable from smartmetals.nl/downloads. For a paper copy simply ask the SmartMetals Team.

Rental Catalogue

Our Rental catalogue covers all mounting solutions for rental purposes.



General Catalogue

Our General catalogue covers all mounting solutions for any installation purpose.



TABLE OF CONTENTS

Product Catalogue 2020 - 2021

GENERAL

Prologue.....	4
Introduction	6

EDUCATION

FLAT PANEL

FLAT PANEL LIFT SYSTEMS - ELECTRICAL.....	8
Floor & wall mounted	10
Floor supported & wall mounted.....	11
Freestanding on floor	12
On wheels	14
On wheels with table & tip function	20

(INTERACTIVE) WHITEBOARD

(INTERACTIVE) WHITEBOARD - LIFT SYSTEMS	22
--	-----------

AV MOUNTING MADE SMART



What once started as a graduation assignment from only one student in Industrial Engineering & Management is now a thriving company with 50+ employees, dedicated to develop smart mounting solutions for the professional AV market.

There is more to our mounts than just metal: we supply not just any piece of metal to mount your valuable audiovisual and multi media equipment to, we supply smart mounting solutions made of metals: "SmartMetals Mounting Solutions".

Smart does not only apply to the functionality of our products, smart also applies to the way we work. By closely following the evolutions and needs of the audiovisual market, listening to and closely working together with our customers we stay ahead of the game.

We take great pride in the fact that all our products, from standard to custom-made, are of Dutch design. Developed in house and manufactured in the Netherlands. Our products distinguish themselves in quality, ease of use and functionality.

Despite the fact we have grown into a prominent international supplier it does not mean we have forgotten where we came from: underneath the shimmering successes we remain simple humans. We care. Not just about making innovative products but above everything we care about you and your business.

all team members of

The SmartMetals Team





ABOUT US

SmartMetals explained

SmartMetals Mounting Solutions is one of the leading international suppliers of audiovisual mounting solutions. Established and based in the Netherlands, we deliver high quality solutions for professionals.

Resources devoted to R&D translate in great responsiveness in the development of innovative products, closely following the evolutions and needs of the audiovisual market and offering quality in design.

Our complete product range includes fixed and mobile mounting solutions, motorized or manually in height adjustable or on a fixed height for projectors, flat screens and whiteboards. We offer a free warranty of 5 years on all our products.

Last but not least we develop custom made solutions for audiovisual installation, including flat panel housings and kiosks, for indoor and outdoor use.



WHY CHOOSE US?



Quality & Functionality

Our goal is to reach true functionality in all our products by combining innovative product design with high quality materials and craftsmanship.



Flexibility & Innovation

We respond to our customers' requests in a flexible way and timely manner. Developing and improving our products and services is a dynamic and continuous process.



Quick & easy installation

All our products are designed to ensure quick and trouble-free installation in any environment.



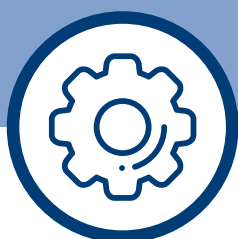
Honest business

We believe in honesty. We believe in caring. We treat our customers, partners, suppliers as well as our employees the way we would want them to treat us. As simple as that.

Just because you don't find it, doesn't mean we don't have it.

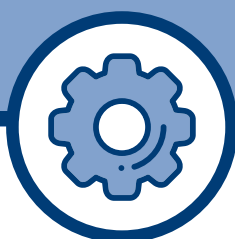
We have all sorts of smart mounting solutions, ranging from standard to customised to completely custom-made ones. Not every project benefits from our standard solutions, nor does every customer settle for standard. When you are involved in a project where demands go beyond what our standard products have to offer, please contact us:

We hear what you ask, listen to what you need and supply you with a solution that embodies just that.



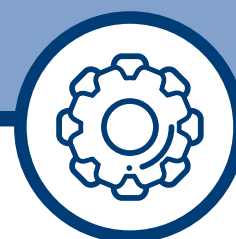
STANDARD

We have a vast product range as presented to you in this catalogue: all standard mounting solutions for your flat panels, projectors and whiteboards, usually available from stock or within a few days after order.



CUSTOMISED

When you require a slight deviation of our standard product, like for example an other colour or an other length, we happily customise our standard product to meet your wishes.



CUSTOM-MADE

Although you have taken inspiration from our standard product range, you want something totally different. It is our pleasure to develop a custom-made product for you to accommodate your needs perfectly.

FROM CONCEPT TO COMPLETION



STEP 1

Product request.

You contact us with your request for a custom-made product. Together we determine product requirements and we provide you with an offer. Upon order we move on to the next step.



STEP 3

Production.

Materials are purchased. Individual make parts are produced after which they are subjected to a provisional quality check.

Process duration: 2-4 weeks



STEP 2

Specification drawing.

After order we will convert your demand and, if any, concept drawing into a detailed specification drawing. Upon presentation you check details and we will process minor changes if any. When you are satisfied with the results, you give us your approval for production.

Process duration: 1-2 weeks



STEP 4

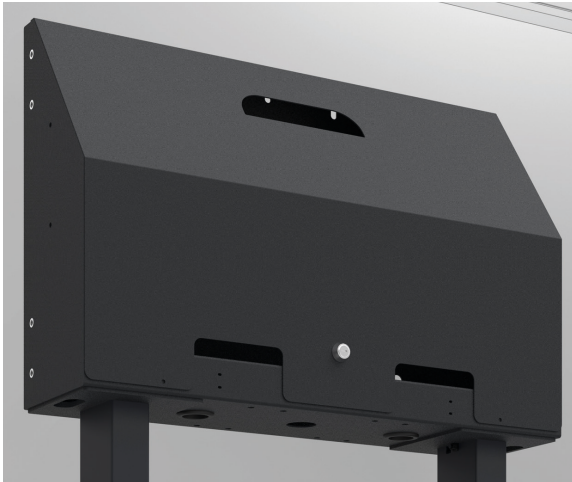
Finishing and assembly.

All manufactured metal make parts are galvanized or powder coated after which they are subjected to yet again a quality check. Then assembly starts followed by final testing the end-product. Remains only packing before collection by you or the carrier.

Process duration: 1-2 weeks

FLAT PANEL LIFT SYSTEMS

Manual & Electrical



ANTI-THEFT

Store and safeguard your valuable peripherals by adding a lockable back cover to your lift system.

BETTER SAFE THAN SORRY

With anti-collision on electrical lift systems, also called anti-pinch protection, you rule out the risk of someone getting hurt or materials damaged when a lift bumps into an obstacle and continues its movement. Anti-collision causes a lift to stop and safely move back up again the moment it experiences resistance.



MULTI PURPOSE CABINET

- ✓ it serves as monitor mounting
- ✓ it offers ample storage for peripherals
- ✓ it has VESA 100 for NUC/mini PC mounting
- ✓ it has a cut-out for a standard flush-mounted box for mounting for example a button panel.

Smarter education

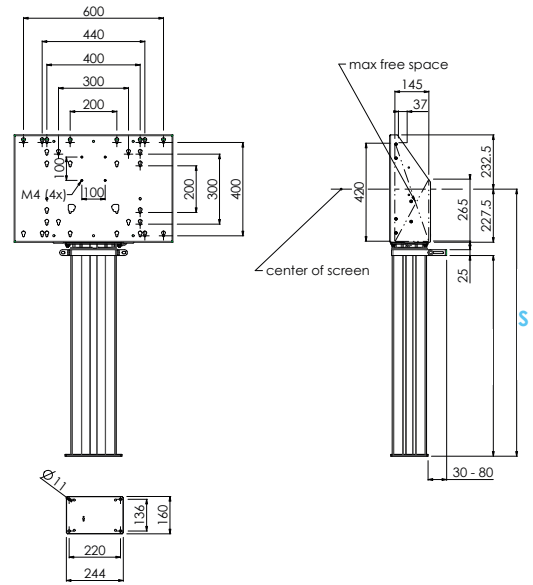
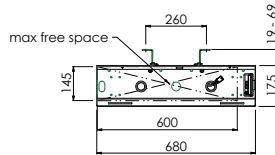
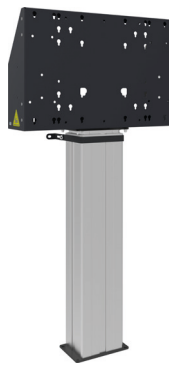
Whether you are a teacher or a student, with a SmartMetals lift system you easily adjust your touchscreen suitable to your height, manually or electrically.

Our lift range is quick and easy to assemble and supplied including flat panel mounting materials. It is designed to accommodate almost all touch screens and offers both cabling and peripherals to be kept completely out of sight yet accessible where it is needed. Most of the lift systems standard come with an integrated anti-collision protection. For the ones that do not anti-collision is optionally available as well as a wide range of other accessories to further extend the functionality of the lift.

ELECTRICAL LIFT SYSTEMS

Floor & wall mounted

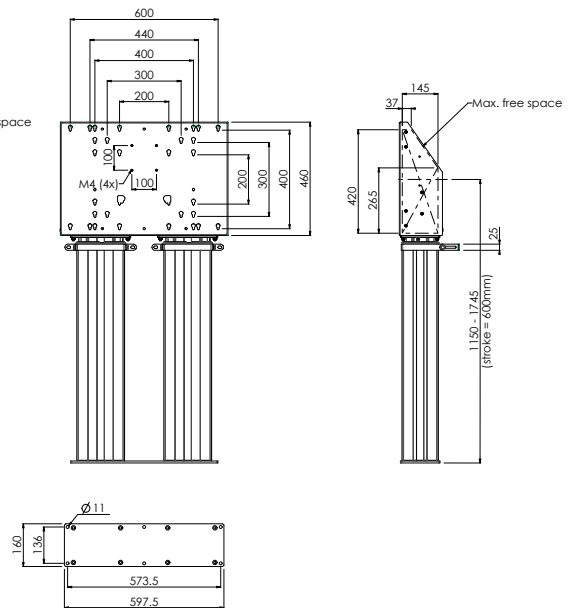
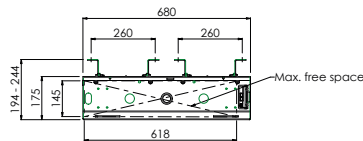
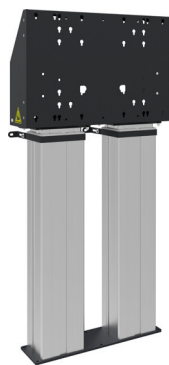
FLOOR LIFT XL MAX. 86 INCH



	Colour	
	Max. load	135 kg
	Max. inch	86
	Position	Landscape & Portrait
	VESA	Max. 600 x 400
	Stroke	600 mm
	Accessories	See from page 16

Article code	Stroke (centre screen) (S)
052.7200	1145.0 mm - 1745.0 mm (600 mm)
052.7250	882.5 mm - 1383.5 mm (500 mm)

FLOOR LIFT DOUBLE XL MAX. 98 INCH



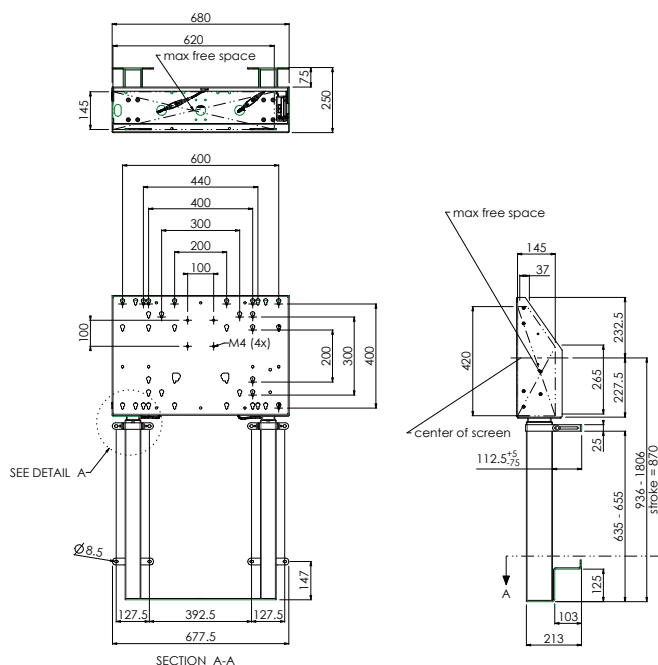
	Colour	
	Max. load	200 kg
	Max. inch	98
	Position	Landscape & Portrait
	VESA	Max. 600 x 400
	Stroke	600 mm
	Accessories	See from page 16

Article code	Stroke (centre screen)
052.7110	1145.0 mm - 1745.0 mm (600 mm)

ELECTRICAL LIFT SYSTEMS

Floor supported & wall mounted, anti-collision included

WALL LIFT XXL MAX. 86 INCH

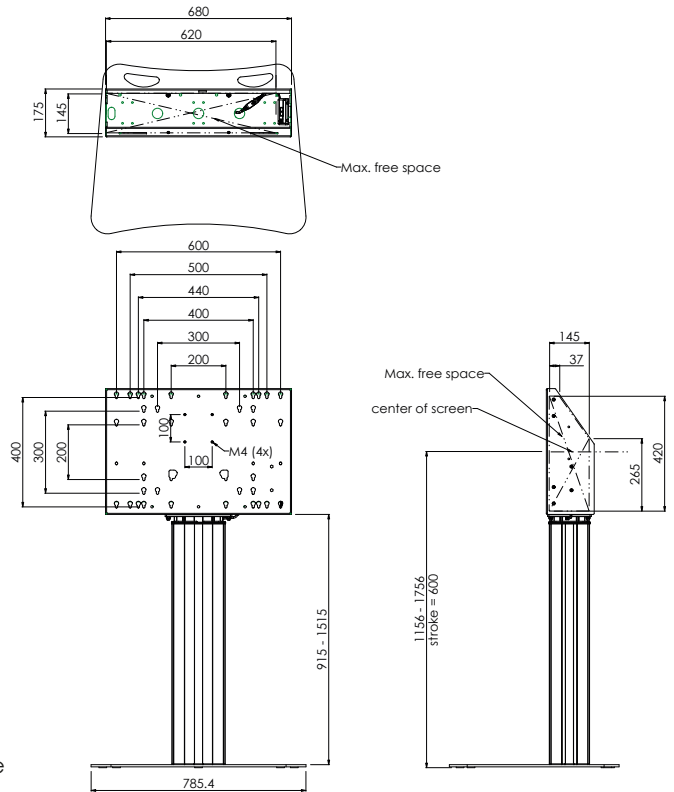


	Colours	○ ●
	Max. load	120 kg
	Max. inch	86
	Position	Landscape & Portrait
	VESA	Max. 600 x 400
	Stroke	870 mm
	Accessories	See from page 16
	Anti-collision	Included

Article code	Colours
052.7150W	White
052.7150B	Black

ELECTRICAL LIFT SYSTEMS

Freestanding on floor



FREESTANDING FLOOR LIFT XL MAX. 135 KG, MAX. 86 INCH

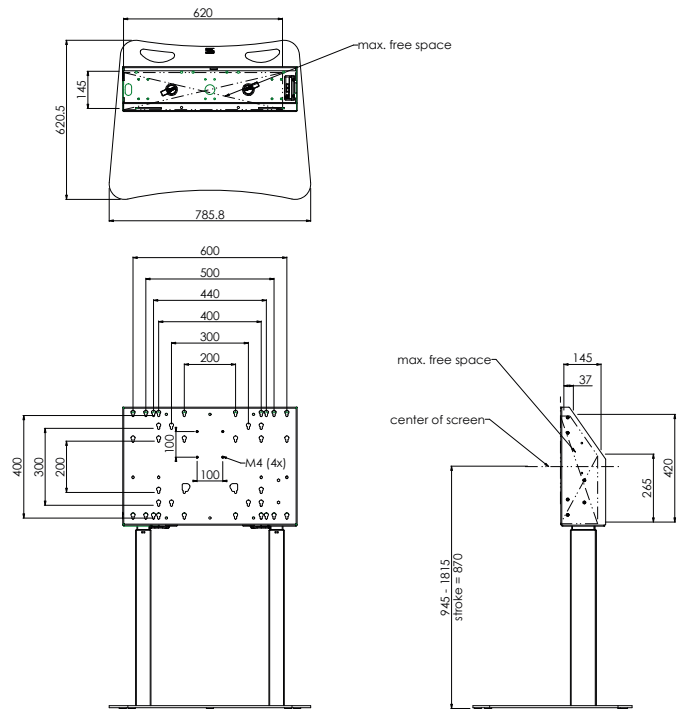
For a freestanding solution, for example when drilling in the floor is not allowed, simply combine our floor lift XL with baseplate 052.7210.

	Colour	
	Max. load	135 kg
	Max. inch	86 inch
	Position	Landscape, Portrait
	VESA	Max. 600 x 400
	Accessories	See from page 58









Article code	Stroke (centre screen)
062.7410	1156.0 mm - 1756.0 mm (600 mm)

ELECTRICAL LIFT SYSTEMS

Freestanding on floor, anti-collision included



FREESTANDING FLOOR LIFT ANTI-COLLISION, MAX. 86 INCH

 Colour	<input type="radio"/> <input checked="" type="radio"/>
 Max. load	120 kg
 Max. inch	86 inch
 Position	Landscape, Portrait
 VESA	Max. 600 x 400
 Stroke	870 mm
 Accessories	See from page 58
 Anti-collision	Included

Article code	Colour
062.7420.11	White
062.7420.01	Black

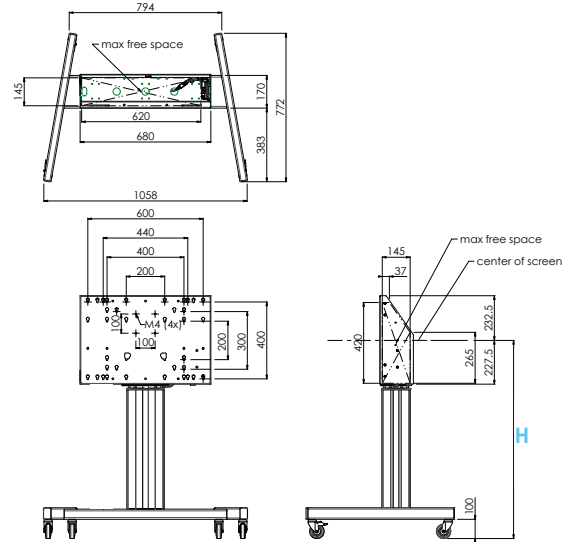
ELECTRICAL LIFT SYSTEMS

On wheels



FLOOR LIFT MAX. 86 INCH

	Colours	● ●
	Max. load	120 kg
	Max. inch	86 inch
	Position	Landscape & Portrait
	VESA	Max. 600 x 400
	Accessories	See from page 16

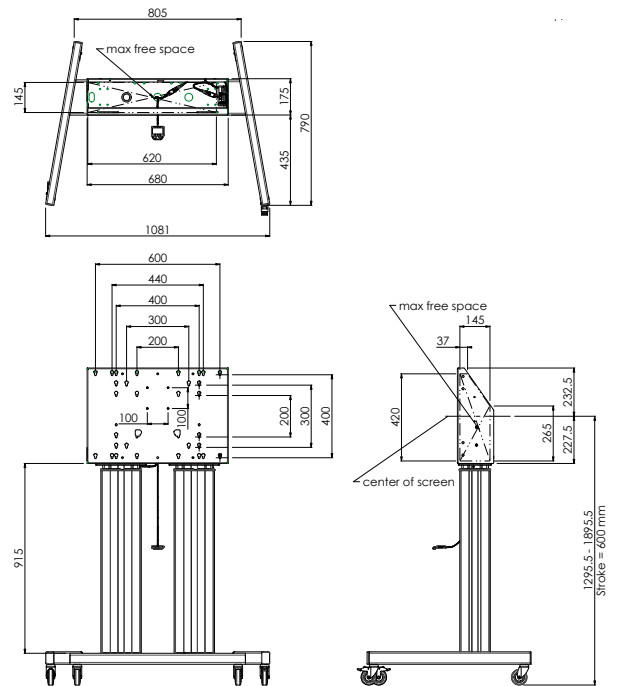


Article code	Colour	Height (centre screen) (H)
062.7270	Silver grey	1030 - 1530 (500 mm)
062.7290	Silver grey	1290 - 1890 (600 mm)
062.7275	Black	1030 - 1530 (500 mm)
062.7295	Black	1290 - 1890 (600 mm)



**FLOOR LIFT DOUBLE XL
MAX. 98 INCH**

	Colour	●
	Max. load	160 / 200 kg* <i>* sturdier wheels (same height), pls contact us</i>
	Max. inch	98 inch
	Position	Landscape
	VESA	Max. 600 x 400
	Accessories	See from page 16











Article code
062.7105

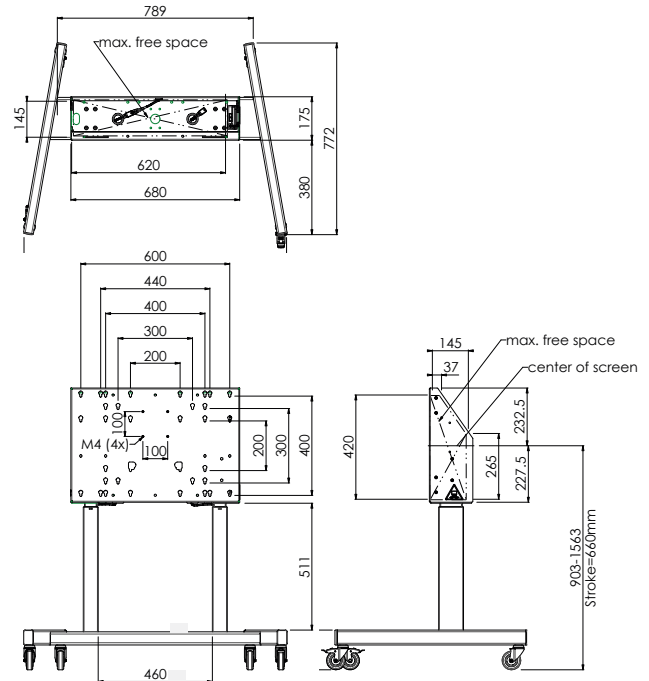
ELECTRICAL LIFT SYSTEMS

On wheels, anti-collision included



FLOOR LIFT MAX. 86 INCH

 Colour	<input type="radio"/> <input checked="" type="radio"/>
 Max. load	120 kg
 Max. inch	86 inch
 Position	Landscape & Portrait
 VESA	Max. 600 x 400
 Stroke	660 mm
 Accessories	See from page 16
 Anti-collision	Included



Article code	Colour
062.7205W	White
062.7205B	Black

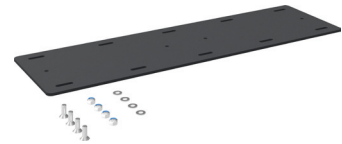
ACCESSORIES

For lift systems



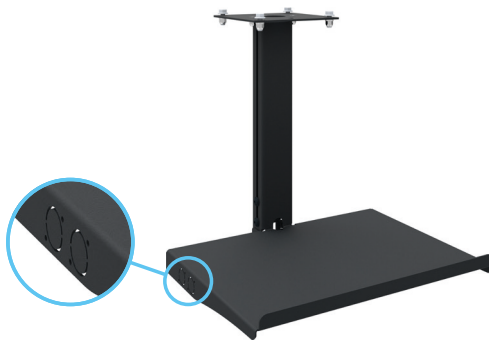
LIFT MOUNT WITH ROTATION
max. 800 x 600 mm, max. load 100 kg

052.5080



LARGE WALL PLATE
for 052.7110

052.7130



LAPTOP SUPPORT
for 2-column lifts with anti-collision

With 2x recess for Neutrik connectors and hidden cable entry.

052.7145



WALL BRACKET
for 052.7200 & 052.7250

To support floor lifts 052.7200 and 052.7250 against a wall. Combined with the large wall plate (052.7235) you create a sturdy fixation to a weak wall. Combine it with the wall fixation kit (052.7230), in case you cannot bolt to the floor. One piece of this wall bracket is standard included with our lift systems.

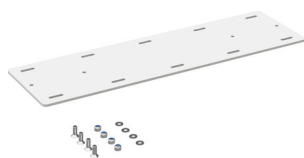
052.7227



FLOOR SUPPORT
for 052.72x0, 062.727x & 062.729x

When you need to place your lift system higher this support takes care of it. Also ideal for branding purposes.

Article code	Description
052.7255	Support 410 mm
052.7255-27	Support 270 mm



LARGE WALL PLATE
for 052.7150

052.7135



CAMERA SUPPORT
for 2-column lifts with
anti-collision

052.7147



CAMERA SUPPORT
for lift systems without
anti-collision

052.7247



BASE PLATE
for 052.7200 and 052.7250

To install floor lifts freestanding.

052.7210



ADAPTER SET
VESA 800/600 x 400/200

Suitable for 052.7110, 052.72x0,
062.73x0, 062.7x05, 062.727x &
062.729x.

052.7265



ADAPTER SET
VESA 800/600 x 500/600

Suitable for 052.7110, 052.72x0,
062.73x0, 062.7x05, 062.727x &
062.729x.

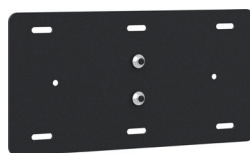
052.7280



WALL FIXATION KIT
for 052.7200 and 052.7250

When drilling in the floor is not
an option.

052.7230



LARGE WALL PLATE
for 052.7200 and 052.7250

To create additional mounting
surface on a weak wall.

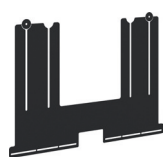
052.7235



**ANTI-COLLISION
MODULE**
incl. 200 mm cable

Two pcs required for 052.7110,
062.7105 and 172.7022-45/55.

052.7217



**UNIVERSAL
SOUNDBAR ADAPTER**

052.7285



LAPTOP SUPPORT
for 052.72x0, 062.72xx &
062.7105

052.7245

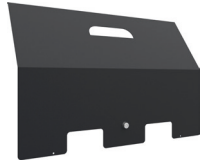


SET OF 2 HANDLES
for 062.72xx & 062.7105

063.7207

ACCESSORIES

For lift systems



LOCKABLE BACK COVER
for 052.72x0, 062.727x & 062.729x

063.7260



KEYBOARD SUPPORT
for 052.72x0 & 062.72xx

To combine with flat panels of max. 70 inch.

063.7240



MOUNTING KIT INCL. WHITEBOARDS FOR TOUCH SCREENS

Our whiteboard mounting kits come with enamel or lacquered steel whiteboards custom-made for your touch display or (interactive) whiteboard model. Compared to lacquered steel, enamel steel offers no usage stains of the markers on the whiteboard and we offer 25 years warranty on the surface of an enamel steel whiteboard. Combine this mounting kit with a wall mount, floor lift or floor lift trolley and you have an educational tool with optimal ease of use.

Article code	Description
152.0110	Mounting kit excl. whiteboards for touch screen 55-70 inch, max. 1750mm x 1050mm (LxH)
152.0120	Mounting kit excl. whiteboards for touch screen 70-86 inch, max. 2050mm x 1250mm (LxH)
152.0110-ES	Mounting kit incl. whiteboards enamel steel for touch screen 55-70 inch, max. 1750mm x 1050mm (LxH)
152.0110-LS	Mounting kit incl. whiteboards lacquered steel for touch screen 55-70 inch, max. 1750mm x 1050mm (LxH)
152.0120-ES	Mounting kit incl. whiteboards enamel steel for touch screen 70-86 inch, max. 2050mm x 1250mm (LxH)
152.0120-LS	Mounting kit incl. whiteboards lacquered steel for touch screen 70-86 inch, max. 2050mm x 1250mm (LxH)

“SmartMetals: The Smarter Way of Mounting”

SmartMetals Mounting Solutions

ELECTRICAL LIFT SYSTEMS

On wheels with table & tip function

Our Tip & Touch Series for flat panels and touch screens offer the most flexible way of use: The trolley can be safely moved from one room to another, it has a table function and from there can be tilted 90° to an upright position to then be adjusted 660 mm in height electrically. The Tip & Touch offers perfect usability for example in a classroom or anywhere where users vary in length.



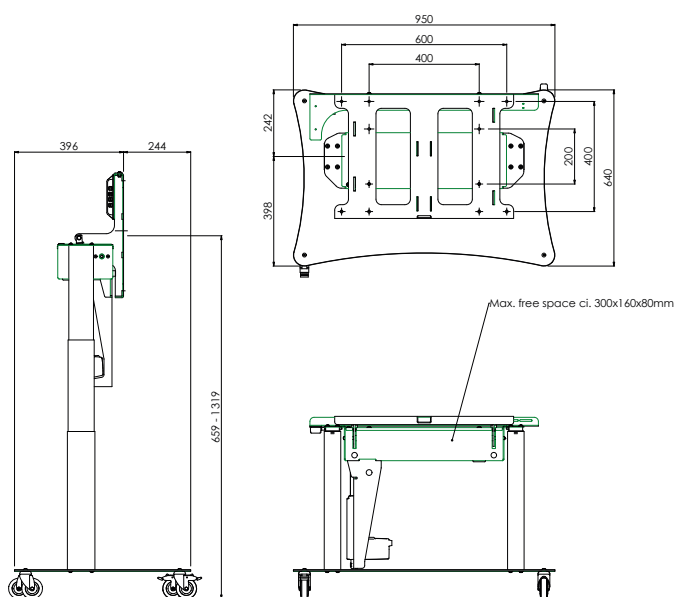
BENEFITS





- ✓ Easily and safely movable
- ✓ Monitor to be used in both a table and upright position
- ✓ Also available in models specifically designed for little children (lower) and wheelchair users (wider)
- ✓ Perfect usability for users with different lengths



TIP & TOUCH STAND

Stand on wheels with anti-collision for touchscreens max. 75 inch. Supplied including mount max. VESA 600 x 400.



 Colour	●
 VESA	Max. 600 x 400
 Stroke	660 mm
 Anti-collision	Included

Article code	Max. load	Max. inch	H base plate
062.7650	60 kg	Max. 65 inch	6 mm
062.7650-95	95 kg	Max. 75 inch	12 mm



Ultimate engagement

With interactive whiteboards being a game changer in classrooms, allowing teachers to engage more directly with interactive content, another need arose: an easily in height adjustable solution to accommodate both teacher and students, suitable for mounting any short throw projector and stable enough when the whiteboard is touched or written on. We fulfilled this need with following (interactive) whiteboard lift systems, for both fixed and mobile use.

ELECTRICAL LIFT SYSTEMS

(Interactive) whiteboard lift systems



FLOOR LIFT FOR INTERACTIVE WHITEBOARD

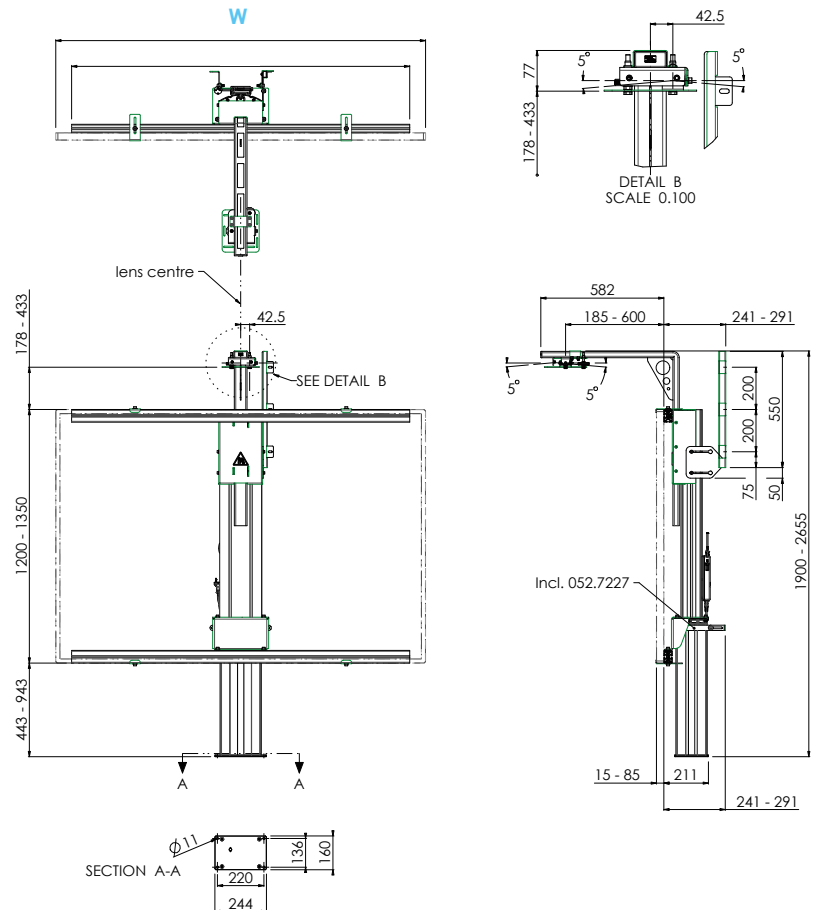
This lift is a quick and easy to install floor lift, allowing electrical height adjustment of your interactive whiteboard and projector. The lifts are fitted with universal whiteboard fitting, making it suitable for almost every IWB.

The lift requires positioning close to a wall to which it can be attached with its adjustable wall bracket.

The floor lift comes with a remote control to adjust the whiteboard 500 mm in height.

Please specify your whiteboard and projector upon order.

	Colour	
	Max. load	80 kg
	Position	Landscape
	Stroke	500 mm
	Accessories	See page 25
	Required	Projector mount (excl.), pls contact us



Benefits

- ✓ Adaptive use
- ✓ Extra stable because of floor and wall mounting
- ✓ Quick and easy to install
- ✓ Universal whiteboard fitting

Article code	Whiteboard width (W)	Inch size
152.1000-77	1600 - 1899 mm	77 inch
152.1000-87	1900 - 2099 mm	87 inch
152.1000-101	2100 - 2299 mm	101 inch

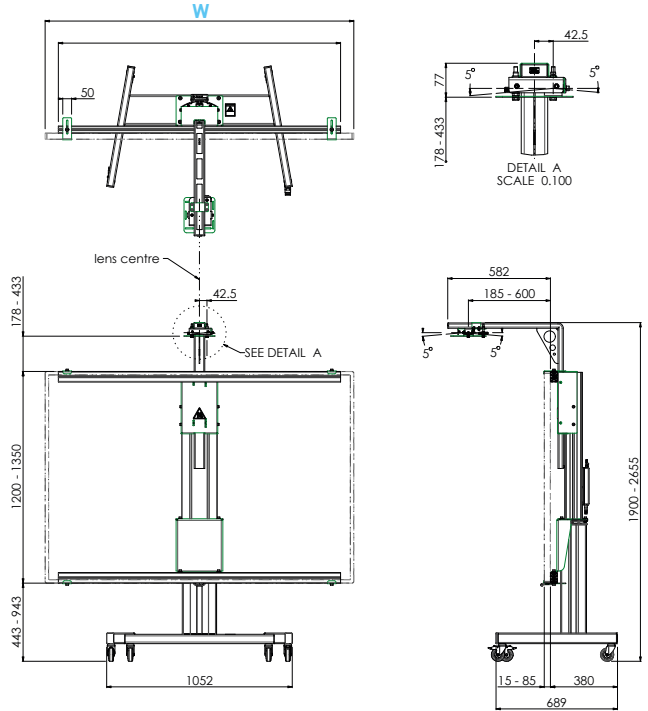


FLOOR LIFT ON WHEELS FOR INTERACTIVE WHITEBOARD

This is the same lift as the floor model but with wheels for flexible use in more than just one location.

When the lift is in its lowest position and projector is in withdrawn position you can ride this lift through a door size 2315 x 930 mm.

	Colour	
	Max. load	80 kg
	Max. inch	77 inch
	Position	Landscape
	Stroke	500 mm
	Accessories	See page 25
	Required	Projector mount (excl.), pls contact us



Benefits

- ✓ Adaptive and flexible use
- ✓ Fits through door
- ✓ Quick and easy to install
- ✓ Universal whiteboard fitting

Article code	Whiteboard width (W)	Inch size
152.2000-77	1600 - 1899 mm	77 inch
152.2000-87	1900 - 2099 mm	87 inch
152.2000-101	2100 - 2299 mm	101 inch



ACCESSORIES

For (interactive) whiteboard lift systems



PROJECTOR BRACKET

For Benq, Epson, Hitachi, NEC, Panasonic, Sony, Vivitek, i3.

Article code	Description
152.1030-01	Bracket Epson EB 600 serie voor 152.1000 & 152.2000 serie
152.1030-02	Bracket Vivitek D7 & D75XX serie voor 152.1000 & 152.2000 serie
152.1030-03	Bracket NEC M351W & UM361X voor 152.1000 & 152.2000 serie
152.1030-06	Bracket i3 L3302FHD, 3002UW, L3502W, 3033W & Optoma ZH400 UST, ZH400USTi voor 152.1000 & 152.200 serie
152.1030-07	Bracket SONY, VPL-SW536C voor 152.1000 & 152.2000 serie
152.1030-08	Bracket Hitachi CP-AX2503 voor 152.1000 & 152.2000 serie
152.1030-09	Bracket Panasonic PT-TW230 voor 152.1000 & 152.2000 serie
152.1030-10	Bracket BenQ MW853UST voor 152.1000 & 152.2000 serie
152.1030-11	Bracket Casio XJ-UT310N, XJ-UT320N, UT351W/XJ-UT351WN voor 152.1000 & 152.2000 serie
152.1030-13	Bracket Canon LV-WX300UST voor de 152.1000 & 152.2000 serie
152.1030-14	Bracket Optoma W319USTi voor 152.1000 & 152.2000 serie
152.1030-15	Bracket Vivitek DX716Z-UST voor 152.1000 & 152.2000 serie
152.1030-17	Bracket Panasonic PT-TW371R voor 152.1000 & 152.2000 serie



EDUCATION



Address

SmartMetals Mounting Solutions B.V.
Vlietskade 8016
4241 WS ARKEL
The Netherlands



Telephone

+ 31 (0)88 70 60 100



Email & Website

info@smartmetals.nl
www.smartmetals.nl

2020 - 2021 Product Catalogue - Education

The information contained in this catalogue is to be used only as a guide to assist with product selection. The products features and technical drawings set forth in this catalogue are subject to change due to product innovations. Please consider information on our website www.smartmetals.nl in any case leading.

V2021.1